




# XCL Series Switchbox

Product  
Information

ATEX II 2 G  EEx d IIB T5  
 Cl. 1, Div.1, Grp.CD



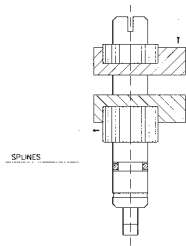
*Experience In Motion*

- A. Tool-free adjustment
- B. Pre-wired terminal strip
- C. Dual 3/4 NPT or M25x1,5 conduit entries



## Features

### Quick-set cams



Tool free adjustment of switch trip is accomplished simply by pushing or pulling the cam and rotating it to the new position. Cams are spring-loaded and splined to maintain switch setting in any installed position.

### Limit switches

Multiple options available:  
Electromechanical, Amplified proximity,  
Namur proximity, SPDT, DPDT.  
Up to 4 pcs possible.

### Cable entries

Dual 3/4 NPT (XCL) or M25x1,5 (XML) conduit entries as standard.

### Terminal strip

Pre-wired, multi-point terminal strip with extra strip as standard for optional solenoid valve.

### Position indicator

Bolt-on Dome indicator for high contrast wide angle viewing. A flat lid without indicator is also available.

### Captive Cover Screws

Permit calibration without potential for losing screws.

### Watertight protection

IEC 529 IP67 / NEMA 4X

### ATEX approved

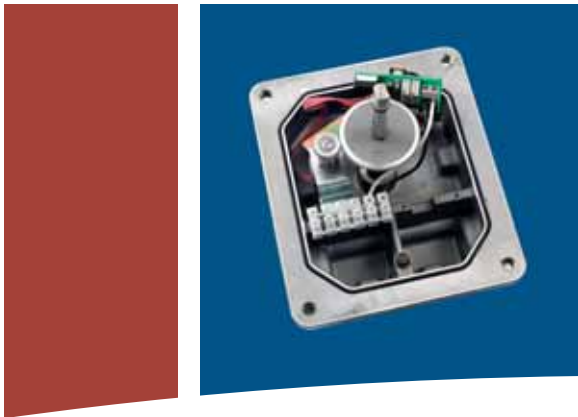
Explosion proof ATEX II 2 G  $\text{Ex}$  EEx d IIB T5

### CSA approved

Div.1, Cl.1, Group C-D, Div.1, Cl.2, Group E-G



XCL series switchbox is designed to be directly and easily mounted onto actuators having connections according to Namur VDI/VDE 3845, in order to reduce switchbox/actuator mounting time.



**4–20 mA Transmitter**



**2 x SPDT switches Type M1**



**2 x SPDT Sabre Switch**

## Switch Options

Switch Option	Manufacturer	Part Number	Load Capacity
M1 - SPDT Mechanical	Honeywell MicroSwitch	V7-1C13D8-201	15 A (1/2 HP) at 125 V AC / 0,5 A at 125 V DC
MG - SPDT Gold Mechanical	Honeywell MicroSwitch	V7-1D11D8-201	1 A at 125 V AC / 50 mA at 24 V DC
M3 - DPDT Mechanical	Cherry	E19-00A	15 A (3/4 HP) at 125 V AC
MB - DPDT Mechanical	Licon	22-104	10 A (1/2 HP) at 125 V AC
P4 - SPST Proximity	Aleph	PS-6132	0.35 A at 140 V AC / 1 A at 50 V DC (50 W Max.)
P5 - SPDT Proximity	Hamlin	59135-030	0.25 A at 120 V AC / 0.25 A at 28 V DC (3 W Max.)
PE - SPDT Sabre Proximity	Flowserve	XA0199	1 A at 120 V AC / 1 A at 24 V DC (25 W Max.)
PP - SPDT Phazer Proximity	Flowserve	XA0155	3 A at 120 V AC / 2 A at 24 V DC (100 W Max.)
PT - SPST BRS Proximity	Flowserve	XA0157	3 A at 120 V AC / 0.5 A at 24 V DC
N8 - Solid State Proximity	Pepperl + Fuchs	NJ2-V3-N	NAMUR Sensor Output / 5–25 V DC Supply Load Current <1 mA (w/Target) / > 3 mA w/out Target
NP - Solid State Proximity	Pepperl + Fuchs	SJ3.5-N	
NQ - Solid State Proximity	Pepperl + Fuchs	NJ4-12GK-N	
NR - Solid State Proximity	Pepperl + Fuchs	NJ4-12GM40-E1	PNP Sinking / 200 mA max. Current / 10–60 V DC
NS - Solid State Proximity	Pepperl + Fuchs	NJ4-12GM40-E2	NPN Sourcing / 200 mA max. Current / 10–60 V DC
NJ - Solid State Proximity1	IFM Efector	IN-2002-AB0A	0.35 A at 250 V AC / 0.1 A at 250 V DC
NU - SPDT GO Proximity	GO	35-13319-A1A	4 A at 120 V AC / 3 A at 24 V DC



### ATEX

XCL series switchbox is ATEX approved. Explosion proof ATEX II 2 G  $\text{Ex}$  EExd IIB T5 and can be installed in hazardous areas.

### CSA

Div.1, Cl.1, Group C–D, Div.1, Cl.2, Group E–G.

### Materials

Cam shaft: AISI 304

Housing: Aluminium, powder coated

Screws, washers, springs, rings: AISI 303

Dome Indicator: Polycarbonate

Label: Polyester



### AS-Interface (AS-i)

XCL series can be equipped with optional AS-i communication capabilities. This technology offers a very simple, flexible and cost effective network system.

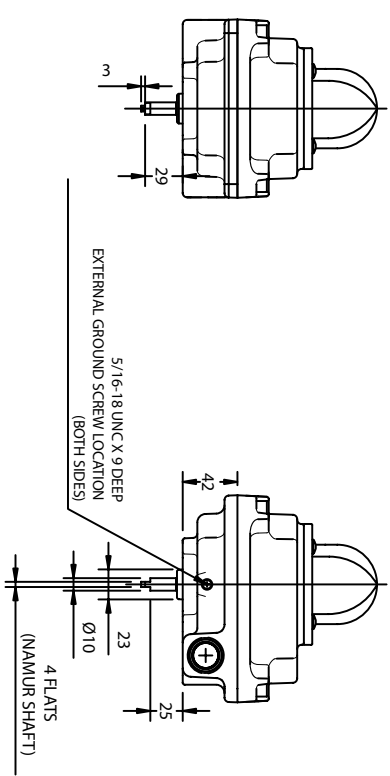
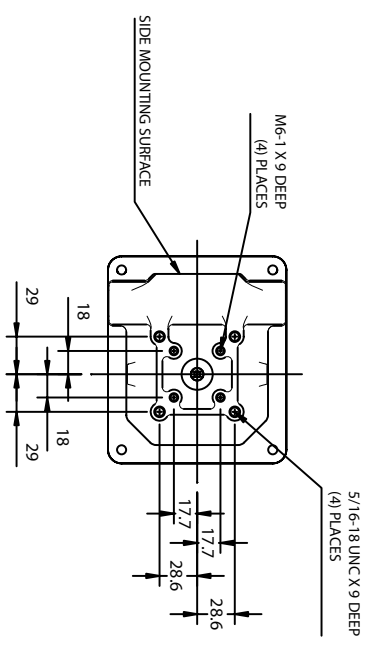
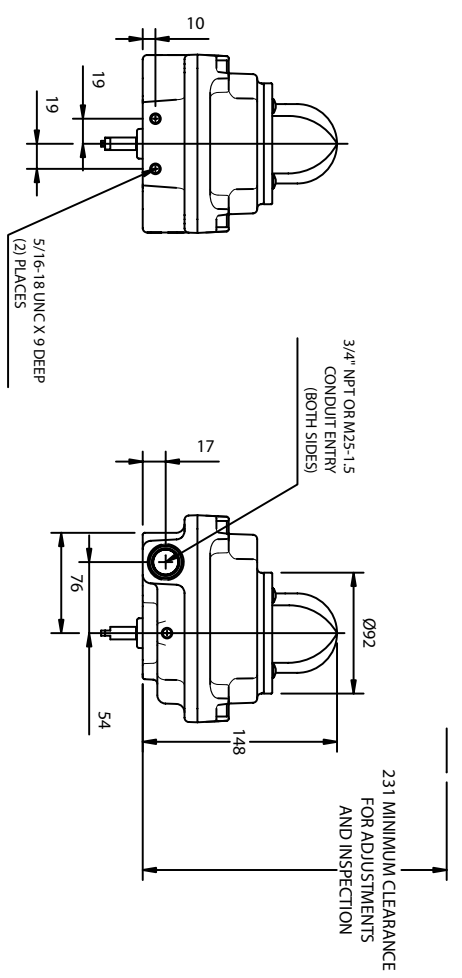
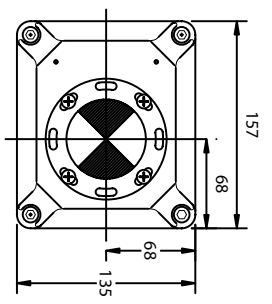
### XCL Series Coding

Brand sticker	P	PMV
Shaft	N	Namur VDI/VDE 3845
Connections (cable entry)	XCL	2 x 3/4 NPT
	XML	2 x M25 x 1,5
Indicator option	1	Flat cover without indicator
	U	Dome, Red/Green
	0	0 switches
	1	1 switch
Qty of switches	2	2 switches
	4	4 switches
	M1	SPDT Mechanical switches 250VAC 10A
	MG	SPDT Mechanical switches gold plated
Switch options	M3	DPDT Mechanical Cherry
	MB	DPDT Mechanical Licon
	P4	SPST proximity
	P5	SPDT proximity
	PE	Sabre SPDT proximity
	PP	Phazer II SPDT proximity
	PT	BRS SPST Phazer II proximity
	N8	P+F NJ2 V3 N (Namur)
	NQ	P+F NJ4-12GK-N (Namur)
	NR	P+F 12GM40-E1 (3 wire NPN NO)
	NS	P+F 12GM40-E2 (3 wire PNP NO)
	NP	P+F SJ 3,5-N (Namur)
	NJ	IFM IN -2002-ABOA
	NU	GO proximity 35-13319-A1A
	FZ	AS-i controller card 2,0 incl. 2 proximity switches
	Certificate	14
18		ATEX II 2 G EEx d IIB T5 / CSA Div.1, Cl.1, GRP CD
Analog Output	0	None
	T	4-20 mA transmitter
Wiring options	0	None
	2	2 (standard)
Minimum extra terminals	4	4 (Optional)
	6	6 (Optional, not possible for all switch options)
	0	None
Accessories	L	Cover bolts lubricated with grease
	P	180° Pot ( for analog options: A, B, C)
	V	Viton O-rings
	0	Black polyester powder coat
Housing/Surface treatment	0	Black polyester powder coat

### Example

PNXCLU2M1-1800-200

# Dimensions (mm)






p/n: FCD PMENBR0010-02



**Hazardous Locations**  

ATEX II 2 G  EEx d IIB T5  
ATEX Demko 04 ATEX 0416173  
Div.1, Class 1, Group C,D

**Palmstierna International AB**  
Korta Gatan 9  
SE-171 54 Solna  
SWEDEN  
Tel: +46 (0) 8 555 106 00  
Fax: +46 (0) 8 555 106 01  
E-mail: infopmv@flowserve.com

**UK**  
Flowserve  
Abex Road  
Newbury, Berkshire, RG14 5EY  
UK  
Tel: +44 (0) 1635 46 999  
Fax: +44 (0) 1635 36 034  
E-mail: pmvukinfo@flowserve.com

**Italy**  
Flowserve Spa  
Via Prealpi, 30  
20032 Cormano (Milano)  
ITALY  
Tel: +39 (0) 2 663 251  
Fax: +39 (0) 2 615 18 63  
E-mail: infoitaly@flowserve.com

**Asia Pacific Headquarters**  
Flowserve Pte Ltd.  
No. 12 Tuas Avenue 20  
REPUBLIC OF SINGAPORE 638824  
Tel: +65 (0) 687 98900  
Fax: +65 (0) 686 24940  
E-mail: fcdasiaprocess@flowserve.com

**Germany**  
Flowserve  
Im grossen Rohr 2  
65549 Limburg/Lahn  
GERMANY  
Tel: +49 (0) 6431 9661 0  
Fax: +49 (0) 6431 9661 30  
E-mail: pmvgermany@flowserve.com

**South Africa**  
Flowserve  
Unit 1, 12 Director Road  
Spartan Ext. 2  
1613 Kempton Park, Gauteng  
SOUTH AFRICA  
Tel: +27 (0) 11 397 3150  
Fax: +27 (0) 11 397 5300

**The Netherlands**  
Flowserve Flow Control Benelux  
Rechtzaad 17  
4703 RC Roosendaal  
THE NETHERLANDS  
Tel: +31 (0) 30 6771946  
Fax: +27 (0) 30 6772471  
E-mail: fcbinfo@flowserve.com

**Flowserve**  
Hanwei Building  
No. 7 Guanghua Road  
ChaoYang District  
100004 Beijing  
CHINA  
Tel: +86-10-592 106 00  
Fax: +86-10-656 127 02

[www.pmv.nu](http://www.pmv.nu)

Flowserve Corporation has established industry leadership in the design and manufacture of its products. When properly selected, this Flowserve product is designed to perform its intended function safely during its useful life. However, the purchaser or user of Flowserve products should be aware that Flowserve products might be used in numerous applications under a wide variety of industrial service conditions. Although Flowserve can (and often does) provide general guidelines, it cannot provide specific data and warnings for all possible applications. The purchaser/user must therefore assume the ultimate responsibility for the proper sizing and selection, installation, operation, and maintenance of Flowserve products. The purchaser/user should read and understand the Installation and Maintenance (I & M) instructions included with the product, and train its employees and contractors in the safe use of Flowserve products in connection with the specific application.

While the information and specifications contained in this literature are believed to be accurate, they are supplied for informative purposes only and should not be considered certified or as a guarantee of satisfactory results by reliance thereon. Nothing contained herein is to be construed as a warranty or guarantee, express or implied, regarding any matter with respect to this product. Because Flowserve is continually improving and upgrading its product design, the specifications, dimensions and information contained herein are subject to change without notice. Should any question arise concerning these provisions, the purchaser/user should contact Flowserve Corporation at any one of its worldwide operations or offices.

©2008 Flowserve Corporation, Irving, Texas, USA. Flowserve and PMV are registered trademarks of Flowserve Corporation.