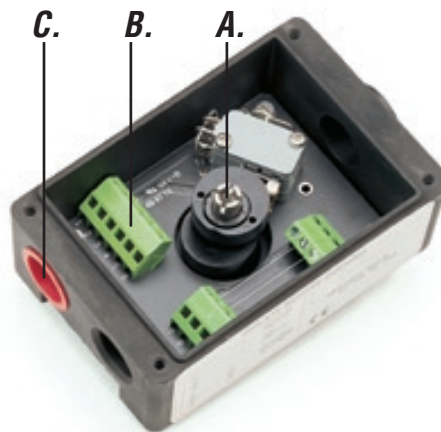


# *W Series Switchbox*

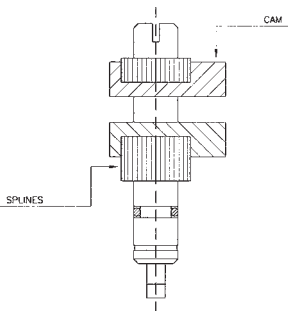
Product  
Information



- A. Tool-free adjustment**
- B. Pre-wired terminal strip**
- C. M 20×1.5 conduit entries**



## Features



### Quick-set cams

Tool free adjustment of switch trip is accomplished simply by pushing or pulling the cam and rotating it to the new position. Cams are spring-loaded and splined to maintain switch setting in any installed position.

### Limit switches

Multiple options available:  
Electromechanical, Amplified proximity,  
Namur proximity.

### Cable entries

Two conduit entries as standard (WDB).  
Three conduit entries available as an option (WDC).

### Terminal strip

Pre-wired on printed circuit board. Extra terminal strip included for optional solenoid valve.  
2,5 mm<sup>2</sup> terminals are standard.

### Position indicator

Available with three different covers and position indicators: flat, Pharos™ or metallic.

### Captive Cover Screws

Permit calibration without potential for losing screws.

### Watertight protection

IEC 529 IP66 / NEMA 4X

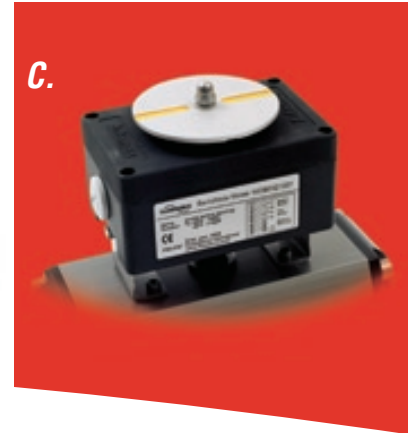
### ATEX approved

Intrinsically safe EEx ia IIC T4 – T6 Ex II 1 G



W series switchbox is designed to be directly and easily mounted onto actuators having connections according to Namur VDI/VDE 3845, in order to reduce switchbox/actuator overall dimensions.

A. WDB01  
 B. WDB02  
 C. WDB03



#### WDB01 Features

- Powder coated aluminium body
- Flat polycarbonate cover
- Yellow double-arrow position indicator

#### WDB02 Features

- Powder coated aluminium body
- Dome style polycarbonate cover
- Red & green Pharos™

#### WDB03 Features

- Powder coated aluminium body and cover
- Aluminium disk position indicator

## Switch Options

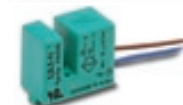
### Electromechanical Switches

| Switch type | Switch characteristics |
|-------------|------------------------|
| V5          | SPDT max 10A 250VAC    |



### Namur proximity switches

| Switch type    | Switch characteristics  |
|----------------|---|
| P+F NJ4-12GK-N | cylindrical proximity 2 wires not amplified Namur EExia IIC certified |
| P+F SJ-3,5-N   | slot proximity 2 wires not amplified Namur EExia IIC certified        |
| P+F NJ2-V3-N   | V3 proximity 2 wires not amplified Namur EExia IIC certified          |

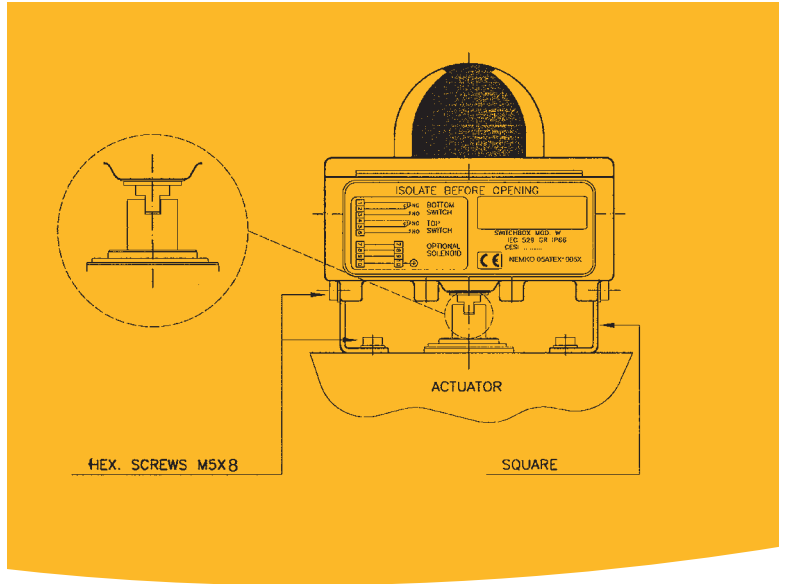


### Namur proximity switches

| Switch type       | Switch characteristics   |
|-------------------|--|
| P+F NJ4-12GM40-E  | cylindrical proximity, 3 wires NPN n.o. supply voltage 10–60 VDC |
| P+F NJ4-12GM40-E2 | cylindrical proximity, 3 wires NPN n.o. supply voltage 10–60 VDC |



More options are available, please contact us.



\* Available with "long Namur shaft" WBB



## AS-Interface (AS-i)

W series can be equipped with optional AS-i communication capabilities. This technology offers a very simple, flexible and cost effective network system.

### Materials

|  |
|--|
| <b>Cam shaft:</b> AISI 304                                 |
| <b>Housing:</b> Aluminium, powder coated                   |
| <b>Screws, washers, springs, rings:</b> AISI 303           |
| <b>Covers, flat 01 &amp; Dome 02:</b> Polycarbonate, clear |
| <b>Cover flat 03:</b> Aluminium, powder coated             |
| <b>Indicator 01 &amp; 02:</b> Nylon 01, Polycarbonate 02   |
| <b>Indicator 03 Metal:</b> Anodised aluminium              |
| <b>Label:</b> Polyester                                    |
| <b>Plug:</b> Nylon   |

## ATEX

W series switchbox is ATEX approved EEx ia IIC T4 – T6  $\text{Ex}$  II 1 G and can be installed in hazardous areas.

## W Series Coding

**W Aluminium Switchbox IP66/IP67** (\* Available ATEX EEx ia)

### Shaft type

- B Namur shaft, long
- D Namur shaft, short

### Cable entry Qty & Thread

- B 2 x M20 x1,5
- C 3 x M20 x1,5

### Cover type

- \* 01 Aluminum body, Polycarbonate flat top cover with indicator
- 02 Aluminum body, Polycarbonate Pharos top cover
- 03 Aluminum body, Aluminum flat top cover with metal indicator
- 11 Aluminum body, Polycarbonate flat top cover with indicator ATEX EEx ia
- 12 Aluminum body, Polycarbonate Pharos top cover ATEX EEx ia
- 13 Aluminum body, Aluminum flat top cover with metal indicator ATEX EEx ia

### Switch type - Standard

- \* 01 Honeywell V3./ V5. SPDT 250 VAC 10A mechanical
- \* 66 Honeywell V5J012BB1D SPDT 125 VAC 0.1A Gold alloy - Cross Point
- \* 06 P&F NJ4-12GK-N Proximity EEx ia Certified NAMUR
- 10 P&F NJ4-12GK40-E2 Proximity 3-wire PNP NO 10-60 VDC
- 17 P&F NCN4-12GM40-Z0 Proximity 2-wire NO 10-60 VDC
- 18 P&F NJ2-V3-N Proximity EEx ia Certified NAMUR
- 19 P&F NJ2-V3-E Proximity 3-wire NPN NO 10-60 VDC NBB2-V3-E0
- 20 P&F NJ2-V3-E2 Proximity PNP NO 10-60 VDC NBB2-V3-E2
- 21 P&F SJ3.5-N Proximity EEx ia Certified NAMUR
- 23 P&F SJ3.5-SN Security proximity EEx ia TUV Certified NAMUR
- 37 P&F NJ4-12GM40-E Proximity 3-wire NPN NO 10-60 VDC
- 38 P&F NJ4-12GM40-E2 Proximity 3-wire PNP NO 10-60 VDC
- \* 43 P&F NCN4-12GM35-NO Proximity EEx ia Certified NAMUR with LED
- 44 P&F NBB3-V3-Z4 Proximity Induttivi 2-wire NO 5-60 VDC
- \* 54 P&F NJ2-11-N-G Proximity EEx ia Certified NAMUR
- 70 P&F NBN4-12GM40-E2 Proximity inductive. 3 wires PNP NO 10-30VDC
- AS AS-i communication

### Switch QTY

- 1 1 Switch
- 2 2 Switch

### INDICATOR

- 0 Standard 2-way

### LABEL

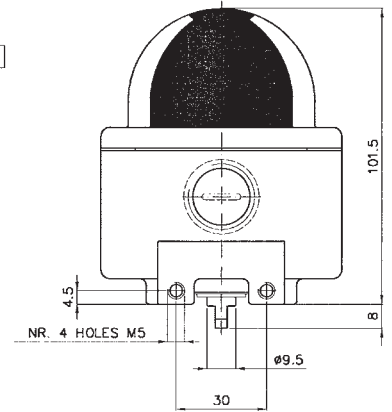
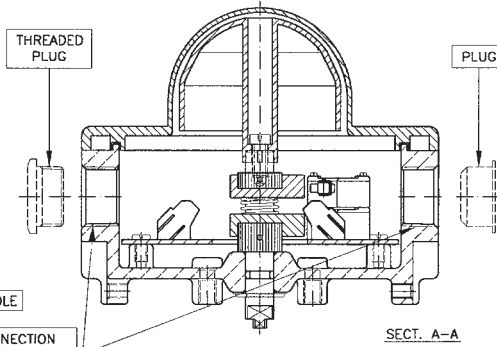
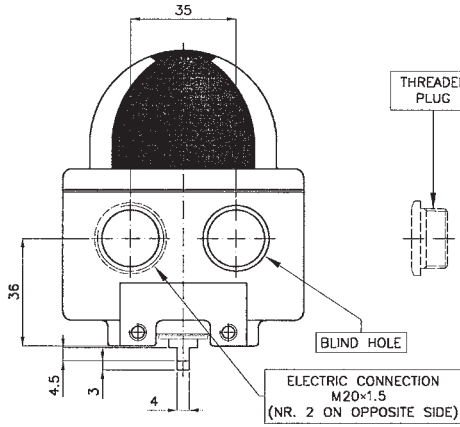
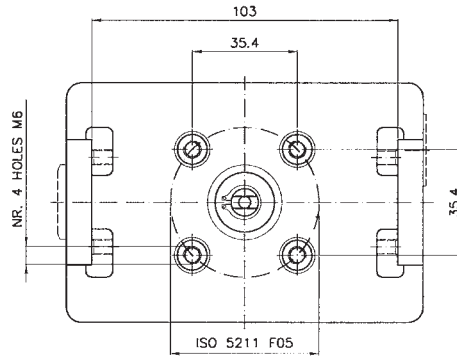
- 0 Blank
- 5 PMV

### Example

WDB0201205



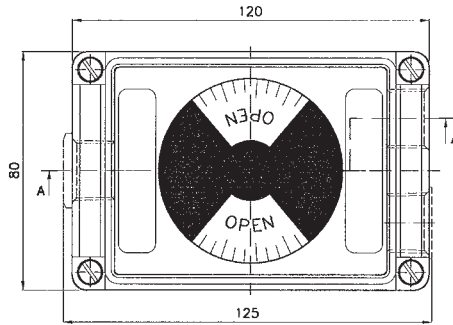
**WDB Dimensions (mm)**



**MOD. 02**

VERSION WITH PHAROS INDICATOR

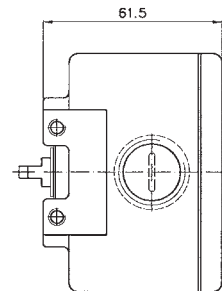
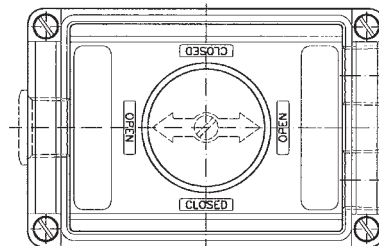
Weight 530 g



**MOD. 01**

VERSION WITH FLAT TRASPARENT COVER

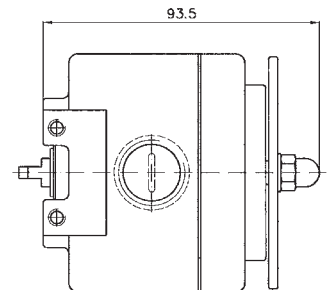
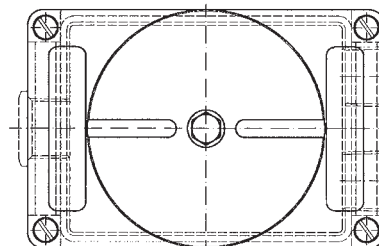
Weight 510 g



**MOD. 03**

VERSION WITH METAL COVER AND METAL INDICATOR



Weight 700 g






Artnr: 30341, Rätt Grafiska AB Ordnr: 19378, Revisionsnr: 2005/01



**Hazardous Locations**   
ATEX EEX ia IIC T4 – T6  II 1 G D

ATEX Nemko 05 Atex 10058

**AS-Interface (AS-i)** 

W series can be equipped with optional AS-i communication capabilities.

Flowserve Corporation has established industry leadership in the design and manufacture of its products. When properly selected, this Flowserve product is designed to perform its intended function safely during its useful life. However, the purchaser or user of Flowserve products should be aware that Flowserve products might be used in numerous applications under a wide variety of industrial service conditions. Although Flowserve can (and often does) provide general guidelines, it cannot provide specific data and warnings for all possible applications. The purchaser/user must therefore assume the ultimate responsibility for the proper sizing and selection, installation, operation, and maintenance of Flowserve products. The purchaser/user should read and understand the Installation and Maintenance (I & M) instructions included with the product, and train its employees and contractors in the safe use of Flowserve products in connection with the specific application.

While the information and specifications contained in this literature are believed to be accurate, they are supplied for informative purposes only and should not be considered certified or as a guarantee of satisfactory results by reliance thereon. Nothing contained herein is to be construed as a warranty or guarantee, express or implied, regarding any matter with respect to this product. Because Flowserve is continually improving and upgrading its product design, the specifications, dimensions and information contained herein are subject to change without notice. Should any question arise concerning these provisions, the purchaser/user should contact Flowserve Corporation at any one of its worldwide operations or offices.

©2004 Flowserve Corporation, Irving, Texas, USA. Flowserve and PMV are registered trademarks of Flowserve Corporation.

#### **Palmstierna International AB**

Korta Gatan 9  
SE-171 54 Solna  
SWEDEN  
Tel: +46 (0) 8 555 106 00  
Fax: +46 (0) 8 555 106 01  
E-mail: infopmv@flowserve.com

#### **UK**

Flowserve  
Abex Road  
Newbury, Berkshire, RG14 5EY  
UK  
Tel: +44 (0) 1635 49 400  
Fax: +44 (0) 1635 36 034  
E-mail: pmvukinfo@flowserve.com

#### **Italy**

Flowserve Spa  
Via Prealpi, 30  
20032 Cormano  
(Milano)  
Tel: + 39 (0)2 663251  
Fax: + 39 (0)2 6151863

#### **Asia Pacific Headquarters**

Flowserve Pte Ltd.  
No. 12 Tuas Avenue 20  
Singapore 638824  
Tel: + 65 (0) 68623332  
Fax: + 65 (0) 68624940

#### **Germany**

Flowserve Limburg  
Im Großen Rohr 2  
D-65549 Limberg/Lahn  
Tel: + 49 (0)6431 9661 0  
Fax: + 49 (0)6431 9661 30

#### **Flowserve South Africa**

Unit 1, 12 Director Road  
Spartan Ext. 2  
Kempton Park  
Gauteng, South Africa  
Tel: + 27 (0)11 397 3150  
Fax: + 27 (0)11 397 5300

#### **Fabromatic BV.**

Wetering 2  
3451 BM  
Vieuten, Netherlands  
Tel: + 31 (0)30 6771946  
Fax: + 27 (0)30 6772471

#### **Flowserve Flow Control Benelux**

Rechtzaad 17  
NL-4703 ROOSENDAAL  
The Netherlands  
Tel: + 31 (0)165 598 870  
Fax: + 31 (0)165 535 906

[www.pmv.nu](http://www.pmv.nu)

**Experience In Motion**