



PMV

X Series Switchbox

Product
Information

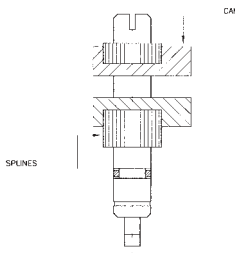


Experience In Motion

- A. Tool-free adjustment**
- B. Pre-wired terminal strip**
- C. Dual 3/4 NPT or M25x1,5 conduit entries**



Features



Quick-set cams

Tool free adjustment of switch trip is accomplished simply by pushing or pulling the cam and rotating it to the new position. Cams are spring-loaded and splined to maintain switch setting in any installed position.

Captive Cover Screws

Permit calibration without potential for losing screws.

Watertight protection

IEC 529 IP66 / NEMA 4X

ATEX approved

Explosion proof EEX d IIB T5 II 2 G

Limit switches

Multiple options available:
Electromechanical, Amplified proximity,
Namur proximity, SPDT, DPDT.
Up to 4 pcs possible.

Cable entries

Dual 3/4 NPT (XCL) or M25x1,5 (XML) conduit entries as standard.

Terminal strip

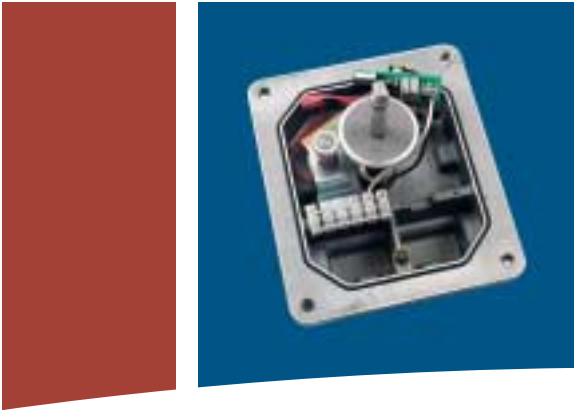
Pre-wired, multi-point terminal strip with extra strip as standard for optional solenoid valve.

Position indicator

Bolt-on Dome indicator for high contrast wide angle viewing. A flat lid without indicator is also available.



X series switchbox is designed to be directly and easily mounted onto actuators having connections according to Namur VDI/VDE 3845, in order to reduce switchbox/actuator mounting time.



4-20 mA Transmitter



2 x SPDT switches Type M1




2 x SPDT Sabre Switch

Switch Options

| Switch Option | Manufacturer | Part Number | Load Capacity |
|-----------------------------|-----------------------|---------------|--|
| M1 - SPDT Mechanical | Honeywell MicroSwitch | V7-1C13D8-201 | 15A (1/2 HP) at 125 VAC / 1/2A at 125 VDC |
| MG - SPDT Gold Mechanical | Honeywell MicroSwitch | V7-1D11D8-201 | 1A at 125 VAC / 50 mA at 24 VDC |
| M3 - DPDT Mechanical | Cherry | E19-00A | 15A (3/4 HP) at 125 VAC |
| MB - DPDT Mechanical | Licon | 22-104 | 10A (1/2 HP) at 125 VAC |
| P4 - SPST Proximity | Aleph | PS-6132 | 0.35A at 140 VAC / 1A at 50 VDC (50 W Max.) |
| P5 - SPDT Proximity | Hamlin | 59135-030 | 0.25A at 120 VAC / 0.25A at 28 VDC (3 W Max.) |
| PE - SPDT Sabre Proximity | Flowserve | XA0199 | 1A at 120 VAC / 1A at 24 VDC (25 W Max.) |
| PP - SPDT Phazer Proximity | Flowserve | XA0155 | 3A at 120 VAC / 2A at 24 VDC (100 W Max.) |
| PL - SPDT Phazer w/LED | Flowserve | XA0154 | 0.5A at 120 VAC / 0.3A at 24 VDC |
| PT - SPST BRS Proximity | Flowserve | XA0157 | 3A at 120 VAC / 0.5 at 24 VDC |
| PX - SPST BRS w/LED | Flowserve | XA0156 | 0.5A at 120 VAC / 0.3A at 24 VDC |
| N8 - Solid State Proximity | Pepperl + Fuchs | NJ2-V3-N | |
| NP- Solid State Proximity | Pepperl + Fuchs | SJ3.5-N | NAMUR Sensor Output / 5-25 VDC Supply Load Current <1 mA (w/Target) / > 3 mA w/out Target |
| NQ - Solid State Proximity | Pepperl + Fuchs | NJ4-12GK-N | |
| NR - Solid State Proximity | Pepperl + Fuchs | NJ4-12GM40-E1 | PNP Sinking / 200 mA max. Current / 10-60 VDC |
| NS - Solid State Proximity | Pepperl + Fuchs | NJ4-12GM40-E2 | NPN Sourcing / 200 mA max. Current / 10-60 VDC |
| NJ - Solid State Proximity1 | IFM Efector | IN-2002-ABOA | 0.35A at 250 VAC / 0.1A at 250 VDC |
| NU - SPDT GO Proximity | GO | 35-13319-A1A | 4A at 120 VAC / 3A at 24 VDC |



ATEX

X series switchbox is ATEX approved. Explosion proof EEX d IIB T5  II 2 G and can be installed in hazardous areas.

Materials

Cam shaft: AISI 304

Housing: Aluminium, powder coated

Screws, washers, springs, rings: AISI 303

Dome Indicator: Polycarbonate

Label: Polyester

X Series Coding

| | | |
|----------------------------------|-----|--|
| Brand sticker | 0 | Automax |
| | P | PMV |
| | N | Namur VDI/VDE 3845 |
| Shaft | XCL | 2 x 3/4 NPT |
| Connections (cable entry) | XML | 2 x M25 x 1,5 |
| | 1 | Flat cover without indicator |
| Indicator option | U | Dome, Red/Green |
| | 0 | 0 switches |
| Qty of switches | 1 | 1 switch |
| | 2 | 2 switches |
| | 4 | 4 switches |
| Switch options | M1 | SPDT Mechanical switches 250VAC 10A |
| | MG | SPDT Mechanical switches gold plated |
| | M3 | DPDT Mechanical Cherry |
| | MB | DPDT Mechanical Licon |
| | P4 | SPST proximity |
| | P5 | SPDT proximity |
| | PE | Sabre SPDT proximity |
| | PP | Phazer II SPDT proximity |
| | PL | Phazer II SPDT proximity with LED |
| | PT | BRS SPST Phazer II proximity |
| | PX | BRS SPST Phazer II proximity with LED |
| | N8 | P+F NJ2 V3 N (Namur) |
| | NQ | P+F NJ4-12GK-N (Namur) |
| | NR | P+F 12GM40-E1 (3 wire NPN NO) |
| | NS | P+F 12GM40-E2 (3 wire PNP NO) |
| | NP | P+F SJ 3,5-N (Namur) |
| | NJ | IFM IN -2002-ABOA |
| | NU | GO proximity 35-13319-A1A |
| | FZ | AS-i controller card 2,0 incl. 2 proximity switches |
| Certificate | 14 | General Purpose |
| | 19 | ATEX II 2 G EEx d IIB T5 |
| Analog Output | 0 | None |
| | T | 4-20 mA transmitter |
| | D | 180 deg 4-20 mA transmitter |
| | A | 0-1k Ohm Pot |
| | B | 0-5k Ohm Pot |
| | C | 0-10k Ohm Pot |
| Wiring options | 0 | None |
| Minimun extra terminals | 2 | 2 (standard) |
| | 4 | 4 (Optional) |
| | 6 | 6 (Optional, not possible for all switch options) |
| Acessories | 0 | None |
| | L | Cover bolts lubricated with grease |
| | P | 180° Pot (for analog options: A, B, C) |
| | V | Viton O-rings |
| Housing/Surface treatment | 0 | Black polyester powder coat |

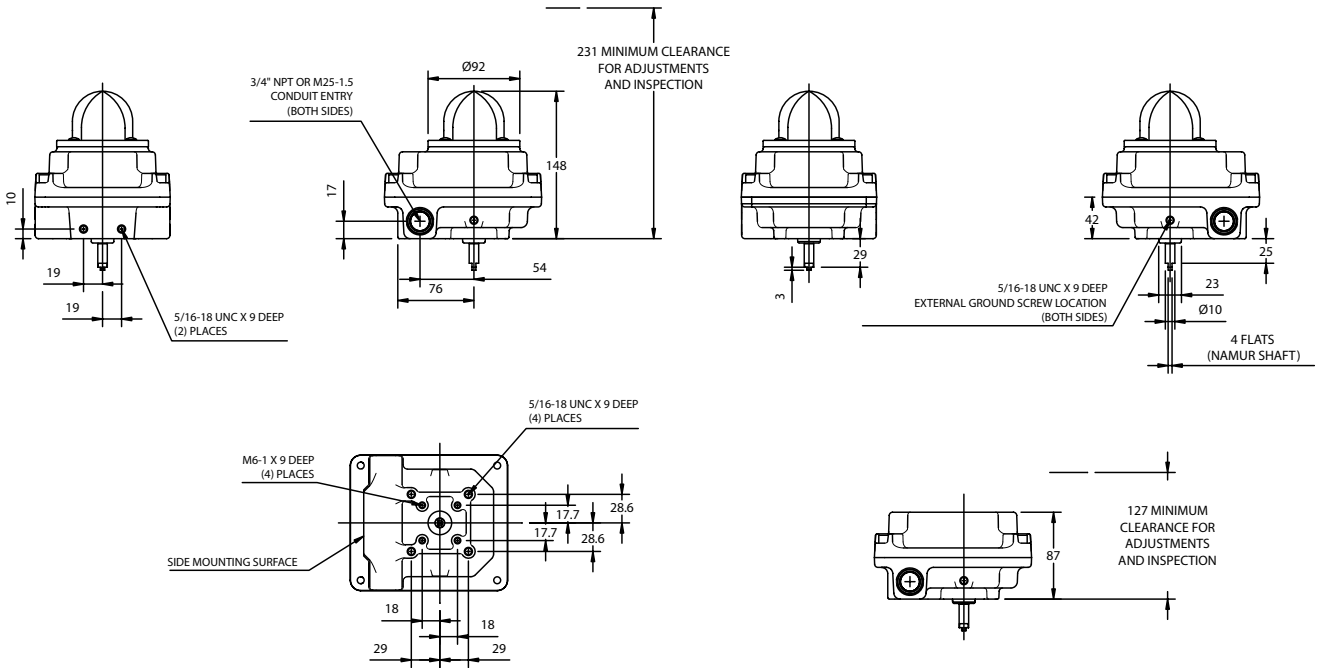
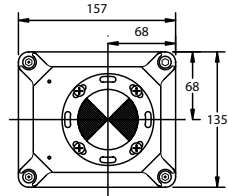
Example
PNXCLU2M1-1900-200



AS-Interface (AS-i)

X series can be equipped with optional AS-i communication capabilities. This technology offers a very simple, flexible and cost effective network system.



Dimensions (mm)





Artnr: 31047, Rätt Grafiska AB Ordnr: 19378, Revisionsnr: 2005/01



Hazardous Locations 
ATEX EEX d IIB T5  II 2 G
ATEX Demko 04 Atex 0416173

Flowserve Corporation has established industry leadership in the design and manufacture of its products. When properly selected, this Flowserve product is designed to perform its intended function safely during its useful life. However, the purchaser or user of Flowserve products should be aware that Flowserve products might be used in numerous applications under a wide variety of industrial service conditions. Although Flowserve can (and often does) provide general guidelines, it cannot provide specific data and warnings for all possible applications. The purchaser/user must therefore assume the ultimate responsibility for the proper sizing and selection, installation, operation, and maintenance of Flowserve products. The purchaser/user should read and understand the Installation and Maintenance (I & M) instructions included with the product, and train its employees and contractors in the safe use of Flowserve products in connection with the specific application.

While the information and specifications contained in this literature are believed to be accurate, they are supplied for informative purposes only and should not be considered certified or as a guarantee of satisfactory results by reliance thereon. Nothing contained herein is to be construed as a warranty or guarantee, express or implied, regarding any matter with respect to this product. Because Flowserve is continually improving and upgrading its product design, the specifications, dimensions and information contained herein are subject to change without notice. Should any question arise concerning these provisions, the purchaser/user should contact Flowserve Corporation at any one of its worldwide operations or offices.

©2004 Flowserve Corporation, Irving, Texas, USA. Flowserve and PMV are registered trademarks of Flowserve Corporation.

Palmstierna International AB
Korta Gatan 9
SE-171 54 Solna
SWEDEN
Tel: +46 (0) 8 555 106 00
Fax: +46 (0) 8 555 106 01
E-mail: infopmv@flowserve.com

UK
Flowserve
Abex Road
Newbury, Berkshire, RG14 5EY
UK
Tel: +44 (0) 1635 49 400
Fax: +44 (0) 1635 36 034
E-mail: pmvukinfo@flowserve.com

Italy
Flowserve Spa
Via Prealpi, 30
20032 Cormano
(Milano)
Tel: + 39 (0)2 663251
Fax: + 39 (0)2 6151863

Asia Pacific Headquarters
Flowserve Pte Ltd.
No. 12 Tuas Avenue 20
Singapore 638824
Tel: + 65 (0) 68623332
Fax: + 65 (0) 68624940

Germany
Flowserve Limburg
Im Großen Rohr 2
D-65549 Limberg/Lahn
Tel: + 49 (0)6431 9661 0
Fax: + 49 (0)6431 9661 30

Flowserve South Africa
Unit 1, 12 Director Road
Spartan Ext. 2
Kempton Park
Gauteng, South Africa
Tel: + 27 (0)11 397 3150
Fax: + 27 (0)11 397 5300

Fabromatic BV.
Wetering 2
3451 BM
Vleuten, Netherlands
Tel: + 31 (0)30 6771946
Fax: + 27 (0)30 6772471

Flowserve Flow Control Benelux
Rechtzaad 17
NL-4703 ROOSENDAAL
The Netherlands
Tel: + 31 (0)165 598 870
Fax: + 31 (0)165 535 906

www.pmv.nu

Experience In Motion